



MP-A40 Series
Communications Setting Utility for Windows
User's Guide

U00137051804

Seiko Instruments Inc.

U00137051800	August 2016
U00137051801	November 2016
U00137051802	January 2018
U00137051803	October 2020
U00137051804	November 2021


Copyright©2016-2021 by Seiko Instruments Inc.
All rights reserved.

Microsoft® and Windows® are either registered trademarks or trademarks of Microsoft Corporation in the U.S.A., Japan, and other countries.

Bluetooth® is registered trademarks of Bluetooth SIG, Inc.

Seiko Instruments Inc. (hereinafter referred to as "SII") has prepared this manual for use by SII personnel, licensees, and customers. The information contained herein is the property of SII and shall not be reproduced in whole or in part without the prior written approval of SII.

SII reserves the right to make changes without notice to the specifications and materials contained herein and shall not be responsible for any damages (including consequential) caused by reliance on the materials presented, including but not limited to typographical, arithmetic, or listing errors.

SII  is a trademark of Seiko Instruments Inc.

Chapter 1 Introduction

1-1

1.1	Overview	1-1
1.2	Terms	1-1
1.3	Symbols	1-2
1.4	Operating System Abbreviations	1-2
1.5	Operating Environment.....	1-2
1.5.1	System Environment	1-2
1.5.2	Printers and Interfaces	1-3

Chapter 2 Installation

2-1

2.1	Installation Method of the Software	2-1
-----	---	-----

Chapter 3 Communication Settings

3-1

3.1	Starting and Setting Method	3-1
3.1.1	Starting the Software.....	3-1
3.1.2	Confirmation of Current Communication Settings of Printer	3-2
3.1.3	Change Communication Settings of Printer	3-3
3.1.4	Restore to Default Settings	3-4
3.1.5	Save the Printer Communication Settings to the File	3-4
3.1.6	Write the Printer Settings to the Printer.....	3-5
3.2	Screen Explanation	3-7
3.2.1	Printer List.....	3-7
3.2.2	Setting Buttons	3-8
3.2.3	Communication Settings Tab of the Interface	3-8
	Bluetooth communication settings	3-8
	Wireless LAN communication settings	3-10
	USB communication settings.....	3-16

Chapter 1 Introduction

1.1 Overview

This manual describes the specifications and notes for MP-A40 series the communication setting utility for Windows (hereinafter referred to as "the software") provided by Seiko Instruments Inc. (hereinafter referred to as "SII").

The software is to change the communication settings of printer.

With this software, the following communication settings can be changed:

- Bluetooth communication settings
- Wireless LAN communication settings^{*1}
- USB communication settings

^{*1}: The wireless LAN settings are performed using Web Browser basically.
The software is available for setting some functions as a supplemental setting of Web Browser.

In principle, this manual is written on the basis of the following conditions:

- Screenshots and display layouts of Windows 8.1
- Operating instructions with a mouse and a keyboard

1.2 Terms

Name	Description
Printer	MP-A40 Series printer made by SII
Printer driver	Printer driver for MP-A40 Series
iSerialNumber	Defined in iSerialNumber field of USB devices descriptor

1.3 Symbols

The symbols used in this manual are described below.

Caution

- ◆ Notes and limitations are described.

Reference

- Supplemental information and related matters are described.

1.4 Operating System Abbreviations

The operating system abbreviations used in this manual are listed below.

When an individual description is necessary, the description is written in parentheses behind the abbreviation.

- General Microsoft® Windows® → Windows
- Microsoft® Windows® 11 → Windows 11
- Microsoft® Windows® 10 → Windows 10
- Microsoft® Windows Server® 2019 → Windows 10 (Windows Server 2019)
- Microsoft® Windows Server® 2016 → Windows 10 (Windows Server 2016)
- Microsoft® Windows® 8.1 → Windows 8.1
- Microsoft® Windows Server® 2012 → Windows Server 2012

1.5 Operating Environment

The operating environment of the software is described.

1.5.1 System Environment

Item	Specifications
Operating Systems	Windows 11 (64 bits) Windows 10 (32 bits and 64 bits) Windows Server 2019 (64 bits) Windows Server 2016 (64 bits) Windows 8.1 (32 bits and 64 bits) Windows Server 2012 (64 bits)
Printer Driver	MP-A40 Series Printer Driver*1
.NET Framework	.NET Framework 3.5 or later

*1: It is necessary to install before using this software.

Caution

- ◆ The software operates using a printer driver. The printer driver is required to be installed on the computer for using this software.

1.5.2 Printers and Interfaces

Printer	Interface
MP-A40 Series	Bluetooth
	Wireless LAN
	USB

Caution

◆ Bluetooth connection is not supported by Windows Server 2019, 2016 or 2012.

Chapter 2 Installation

2.1 Installation Method of the Software

The software is installed at the same time with the printer driver.

Download the printer driver from the SII's Web page and install it.

For the installation procedure of the printer driver, see the installation part of "MP-A40 Series Printer Driver User's Guide".

Chapter 3 Communication Settings

3.1 Starting and Setting Method

This section describes the starting and setting method of the software.

3.1.1 Starting the Software

The startup procedure of the software is described.

- **For Windows 11 and Windows 10**

Select [Communication Utility] in [SII MP-A40 Series Printer] from the Start menu, and then the software starts up.

- **For Windows 8.1 and Windows Server 2012**

Click the down arrow displayed in the bottom left of tile menu of Start Screen.

Click [Communication Utility] in [SII MP-A40 Series Printer] from [Apps] view, and then the software starts up.

3.1.2 Confirmation of Current Communication Settings of Printer

The procedure to confirm the current communication settings of the printer is described below.

1. Make sure that the connected printer can communicate.
2. Start the software in the procedure of "3.1.1 Starting the Software".
When only one printer is installed, the communication settings are loaded automatically at the software startup. Proceed to step 4.
3. Select the printer from [Printer Name], and click [Load] button.

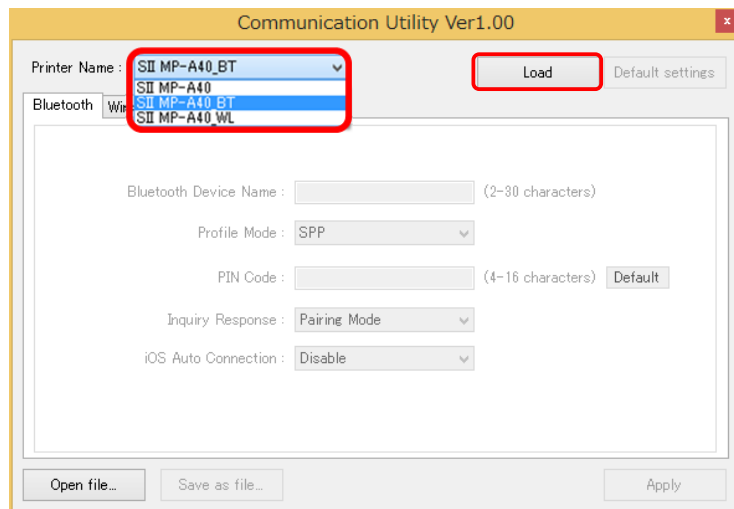


Figure 3-1 Printer Selecting Screen

4. The communication settings are loaded, and the setting screen is switched to the current connection method tab.

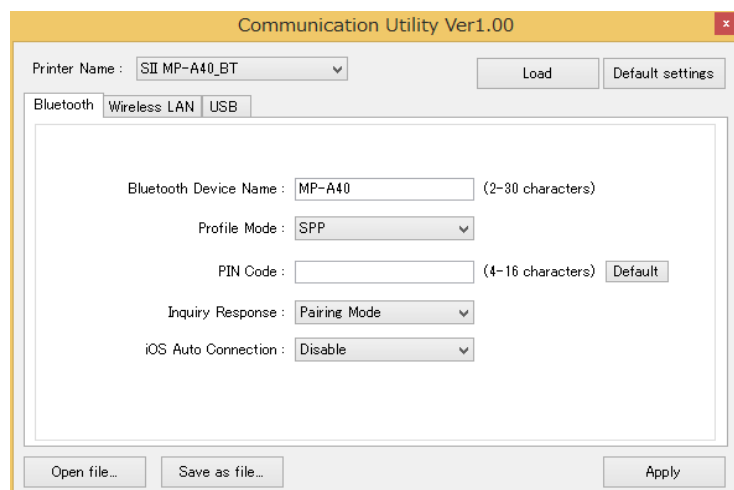


Figure 3-2 Communication Setting Screen

Caution

- ◆ The Bluetooth PIN code is not loaded even when [Load] button is clicked.
- ◆ To confirm the communication settings of the printer newly connected after starting the software, restart the software.

3.1.3 Change Communication Settings of Printer

The procedure to change the communication settings of the printer is described below.

1. Follow the steps of "3.1.2 Confirmation of Current Communication Settings of Printer" to display the current communication settings of the connected printer.
2. Change the contents of the communication settings, and then click [Apply]. The communication settings are written to the printer.

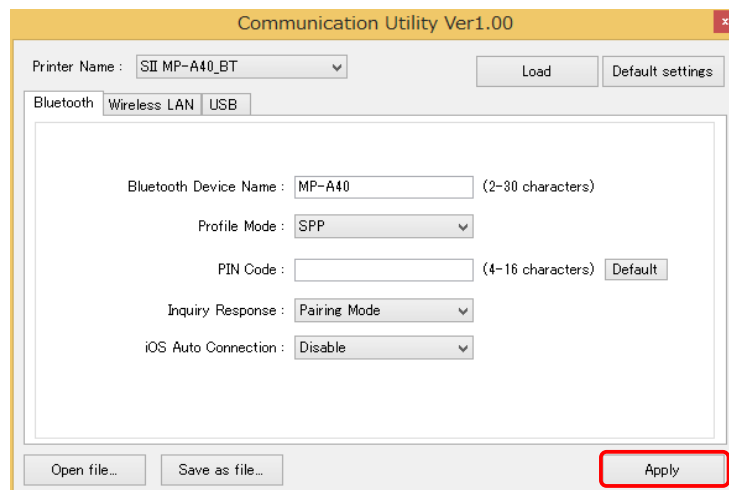


Figure 3-3 Change Communication Settings

Caution

- ◆ When iSerialNumber is changed in the state that the connection method with the printer is USB communication, the printer needs to be restarted. When restarting the printer, the printer driver is automatically installed as a new printer. To perform the communication settings of the newly connected printer, restart the software.
- ◆ When setting up multiple printers continuously while the software is running, connect the printers to the same port.

Reference

- The setting will not be changed when the input item in the screen is blank.

3.1.4 Restore to Default Settings

The procedure to restore the printer communication settings to the default settings is described below.

1. Click the [Default Settings] button to display the default settings.

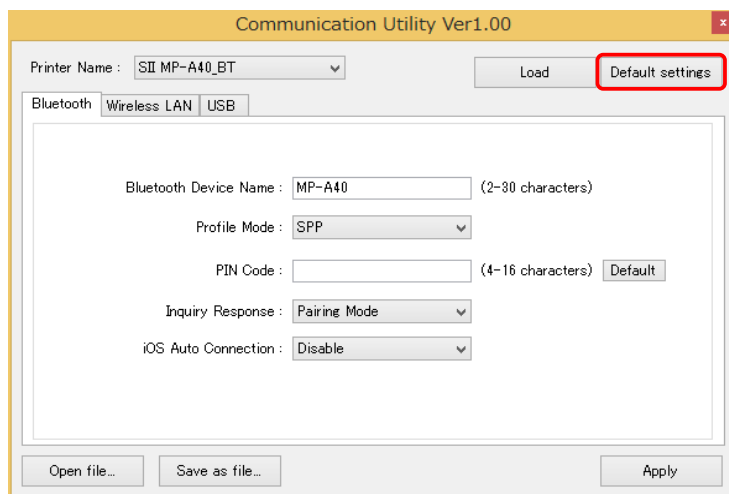


Figure 3-4 Default Settings

2. Click the [Apply] button to write the communication settings to the printer. See the "3.2.2 Setting Button" for details of the default settings.

3.1.5 Save the Printer Communication Settings to the File

The procedure to save the printer communication settings as a file (*.scs) is described below.

1. Click the [Load] button to display the printer communication settings.
2. Change the communication settings when necessary.
3. Click the [Save as file...] button.

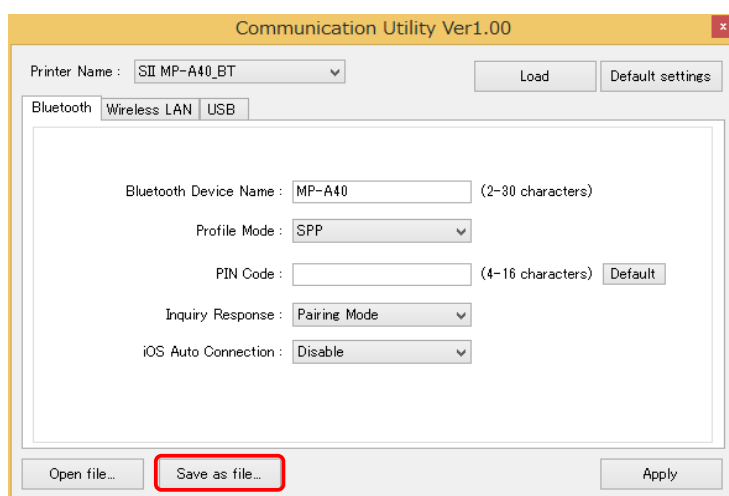


Figure 3-5 Save Communication Settings

4. Specify the location and the name of the file (*.scs). Click the [Save] button to save the settings as a file (*.scs).

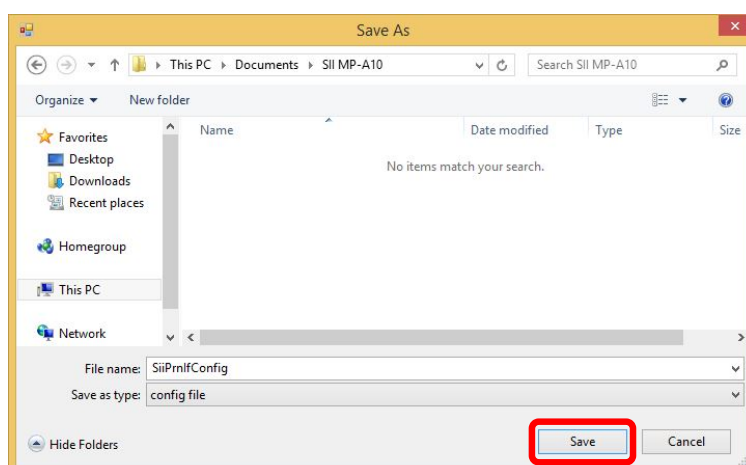


Figure 3-6 [Save as file...] Dialog

Caution

- ◆ The setting of [PIN Code] in the [Bluetooth] tab will not be saved in the file.

Reference

- The setting will not be changed when the input item in the screen is blank.

3.1.6 Write the Printer Settings to the Printer

The procedures to write the contents of the file (*.scs) saved at "3.1.5 Save the Printer Communication Settings to the File" to the printer is described below.

1. Click the [Open file...] button.

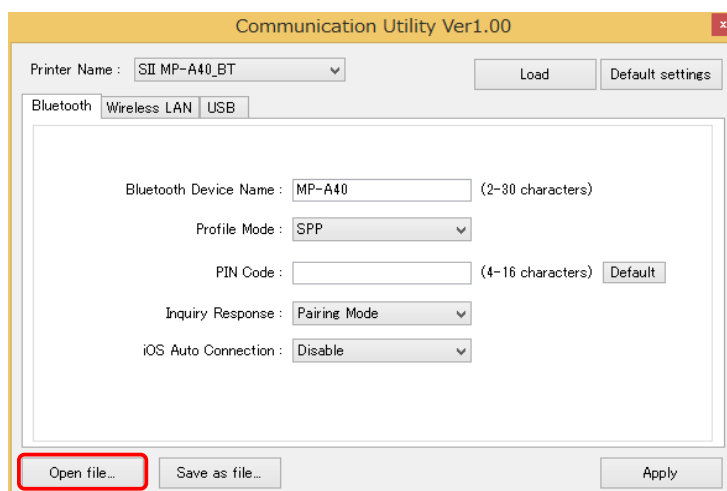


Figure 3-7 Open File (*.scs)

2. Select the file (*.scs), and click the [Open] button.

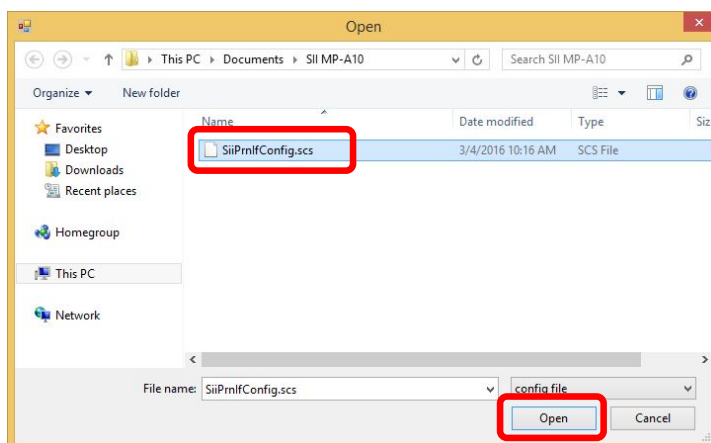


Figure 3-8 [Open] Dialog

3. The contents of the file (*.scs) are displayed. Click the [Apply] button to write the communication settings to the printer.

Caution

- ◆ When iSerialNumber is changed in the state that the connection method with the printer is USB communication, the printer needs to be restarted. When restarting the printer, the printer driver is automatically installed as a new printer. To perform the communication settings of the newly connected printer, restart the software.
- ◆ When setting up multiple printers continuously while the software is running, connect the printers to the same port.

Reference

- The setting will not be changed when the input item in the screen is blank.

3.2 Screen Explanation

The screen layout of the software is described.

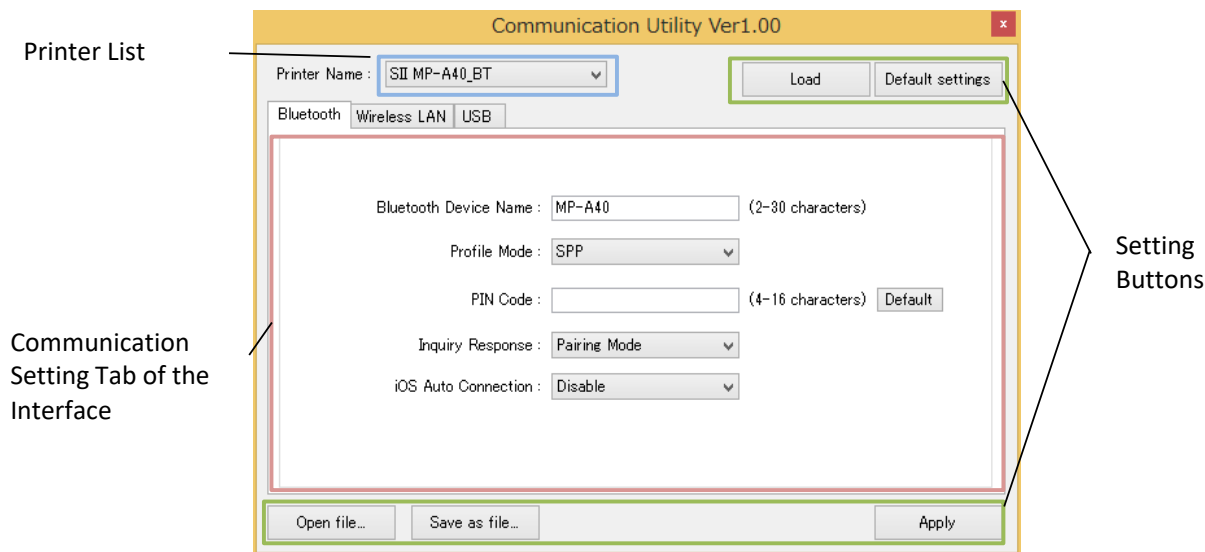


Figure 3-9 Whole view

3.2.1 Printer List

The printer list shown in Figure 3-9 is described below.

Name	Description
Printer Name	Displays the drop down list of the printer drivers already installed.

3.2.2 Setting Buttons

The setting buttons shown in Figure 3-9 are described below.

Name	Description
Load	Loads and displays the setting information of the printer selected in [Printer Name].
Default settings	Displays the default settings. The settings currently displayed will be overwritten with the default settings.
Open file...	Loads and displays the saved file (*.scs).
Save as file...	Saves the contents displayed in the communication setting tab of the interface as a file (*.scs).
Apply	Writes the contents displayed in the communication setting tab of the interface to the printer.

The default settings displayed in the setting screen by clicking the [Default settings] button are shown below.

Interface	Default Settings
Bluetooth	Bluetooth Device Name : MP-A40 Profile Mode : SPP PIN Code : (blank) Inquiry Response : Pairing Mode iOS Automatic Connection Selection : Disable
Wireless LAN	Save DHCP Info Selection : Disable DHCP Timeout Period : 11 Receive Timeout Period : 300
USB	USB iSerialNumber Settings : Undefined

3.2.3 Communication Settings Tab of the Interface

The communication settings of each interface can be performed.

Bluetooth communication settings

Select the [Bluetooth] tab to display the following screen.

Bluetooth Wireless LAN USB

Bluetooth Device Name : MP-A40 (2-30 characters)

Profile Mode : SPP

PIN Code : (4-16 characters) Default

Inquiry Response : Pairing Mode

iOS Auto Connection : Disable

Figure 3-10 [Bluetooth] Tab Screen

Name	Description
Bluetooth Device Name	Enter the Bluetooth device name.* ¹ 2 to 30 characters can be input. Ignored when the text box is blank. Default setting is 'MP-A40'.
Profile Mode	Select for profile mode. SPP : Set Serial Port Profile (SPP). iAP2 : Set Accessory Protocol for iOS (iAP2). When connect from the device such as Android or Windows PC, set this Profile Mode to [SPP], and when connect from iOS device, set to [iAP2]. This setting is also available from the switch operation of printer. For further information, see "Thermal Printer MP-A40 series Use's Guide".
PIN Code* ¹	Enter PIN code.* ² 4 to 16 characters can be input. Ignored when the text box is blank. PIN code is not loaded even when the [Load] button is clicked.
Default	'0000' is input in [PIN Code].
Inquiry Response	Select for Inquiry Response. Pairing Mode : To enable the printer to be in pairing mode, turn off the printer power and then press the power switch for 7 seconds or more. WIRELESS LED blinks 2 times for 1 second, and the printer becomes pairing mode for about 60 seconds. During pairing mode, pairing with the Bluetooth host device is available. (Default) Always : The printer always responds to the search from the Bluetooth host, so pairing is always available.
iOS Auto Connection	Select for iOS Auto Connection. (Only when selected [iAP2] in Profile Mode.) Disable: iOS Auto Connection is disabled. (Default) Enable: When the iOS device connection is disconnected, the printer tries to reconnect with the iOS device last connected.

*1: When the Bluetooth host supports SSP (Simple Secure Pairing), the host is connected by SSP.
When the Bluetooth host does not support SSP, the host is connected by PIN code.

*2: The characters available for Bluetooth device name or PIN code settings are as follows:
'0' to '9', 'A' to 'Z', 'a' to 'z', '+', '-', '_', '#', '*', and ' ' (Space: 20H)

Wireless LAN communication settings

Select the [Wireless LAN] tab to display the following screen.

Bluetooth Wireless LAN USB

Save DHCP Info :

DHCP Timeout : (1-300s)

Receive Timeout : (60-300s)

Wireless connection only

Figure 3-11 [Wireless LAN] Tab Screen

Name	Description
Save DHCP Info	Set the saving DHCP info. Disable: Saving is disabled. (Default) Enable: Saving is enabled. When setting is "Enable", IP address and Subnet mask information retrieved by DHCP is saved in Wireless LAN interface.
DHCP Timeout	Set the DHCP timeout period. Can be specified in 1 to 300 seconds for this timeout period. The number of default seconds is 11.
Receive Timeout	Set the receive timeout period. Can be specified in 60 to 300 seconds for this timeout period. The number of default seconds is 300.
Wireless LAN Settings	Displays the printer's wireless LAN settings in the Web browser. Available to display only when the wireless LAN is selected.

Figure 3-12 [Wireless] Screen (sample)

Name	Description ("_": Default Value)
Wireless: Communication and control parameters can be displayed / set.	
Mode	Select communication mode. <ul style="list-style-type: none"> • Client mode: Select this when use in Client mode. • <u>AP mode</u>: Select this when use in Simple AP mode.
Band	Select Band. <ul style="list-style-type: none"> • <u>2.4G</u> (802.11b/g/n) • 5G (802.11a/n).
Channel	Select Channel. <ul style="list-style-type: none"> • <u>Auto</u> • 1 to 11, 36, 40, 44, 48, 52, 56, 60, 64, 100, 104, 108, 112, 116, 132, 136, 140 • 12, 13, 120, 124, 128*¹ • 149, 153, 157, 161, 165*²
SSID	Set SSID. <ul style="list-style-type: none"> • <u>SII-Printer</u>
Security	Select Security. <ul style="list-style-type: none"> • <u>None</u> • WEP 40bit • WEP 128bit • WPA PSK • PEAP • EAP-TTLS • WPA PEAP • WPA EAP-TTLS
Configuration	Select the specified method of Wireless LAN IP address. "Static IP (Static IP address)" is fixed when using in Simple AP mode. <ul style="list-style-type: none"> • <u>Static IP</u>: Static IP address • Dynamic IP: Dynamic IP address

Name		Description ("_": Default Value)
MAC Address		Displays MAC Address.
IP Address		Displays IP Address. When Mode is switched, the following value is automatically input in IP address box. Input an appropriate address according to the using network environment. • Switched to Client mode: 192.168.0.190 • Switched to AP mode: 192.168.0.1
Subnet Mask		Set Subnet Mask. • <u>255.255.255.0</u>
Default Gateway		Set Gateway Address. • <u>0.0.0.0</u>
DHCP Server		Set <u>Enable</u> / Disable setting of DHCP server. DHCP server can work only in Simple AP mode.
Transmit Key		Select WEP Encryption Key number. • <u>1</u> • 2 • 3 • 4
Key 1 to 4		Set WEP encryption key number.
Pre Shared Key		Set Pre Shared key of WPA PSK.
User		Set User Name.
Password		Set Password.
Server Certificate		Registers root certificate.
Printer Firmware		Displays Printer Firmware Version.
WirelessLAN Firmware		Displays Wireless LAN Interface Firmware Version.
Apply		Saves the setting value and reboots the Wireless LAN Interface.
Reset		Deletes the changed value and returns to the previous value.

• The display items are different depends on the selection result of "Mode" or "Security".

*1: Only for Japan, EU, EFTA, Turkey and Brazil.

*2: Only for USA, Canada and Brazil.

SII

Wireless

SNMP Trap

Web Printing

System

[Version]
Printer Firmware:
1.00.00

WirelessLAN Firmware:
01.00.57

SNMP Trap

IP Address for TRAP: . . .

ColdStart TRAP: ☐ Enabled

LinkUp TRAP: ☐ Enabled

AuthenticationFailure TRAP: ☐ Enabled

Apply **Reset**

Figure 3-13 [SNMP Trap] Screen

Name	Description ("_": Default Value)
SNMP Trap: SNMP parameters can be set.	
IP Address for TRAP	Set destination IP address of trap.
ColdStart TRAP	Set Enabled / <u>Disabled</u> for ColdStart Trap.
LinkUp TRAP	Set Enabled / <u>Disabled</u> for LinkUp Trap.
AuthenticationFailure TRAP	Set Enabled / <u>Disabled</u> for AuthenticationFailure Trap.
Apply	Saves the setting value and reboots the Wireless LAN Interface.
Reset	Deletes the changed value and returns to the previous value.

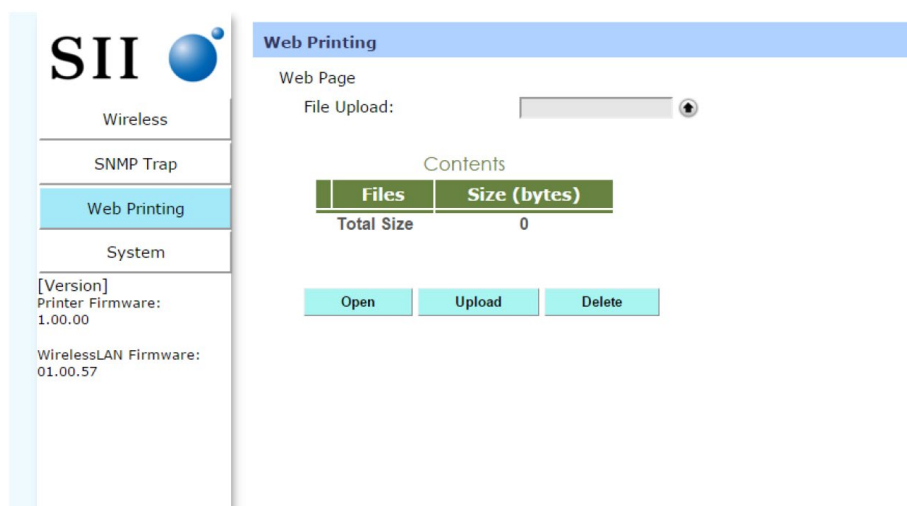


Figure 3-14 [Web Printing] Screen

Name	Description ("_": Default Value)
Web Printing: The printer can print using the script on the Web page by this function. Once user Web page has been Uploaded, the Web page can be displayed on a device using its browser. And also, the printer can print data such as texts by describing in script on user Web page.	
File Upload	Specifies Web page created by user (user Web page) and image data file (i.e. JPEG file) which is used in user Web page.
Contents	Displays the file list which is registered with Wireless LAN Interface.
Open	Opens user Web page that checked in [Contents].
Upload	Registers user Web page or image data file specified in [File Upload] with Wireless LAN Interface. Up to 1M byte in total are registered.
Delete	Deletes user Web page data or image data file checked in in [Contents].

Figure 3-15 [System] Screen

Name	Description ("_": Default Value)
System: Wireless LAN Interface Firmware can be updated and Wireless LAN settings can be reset factory default settings.	
Printer Firmware Version	Displays Printer Firmware Version.
WirelessLAN Firmware Version	Displays Wireless LAN Interface Firmware Version. Please follow the instructions of seller.
WLAN Firmware Upload	Updates Wireless LAN Interface Firmware.
WLAN Reset to Factory	Changes wireless LAN settings to factory default settings.
Printer Reset	Resets the printer. Wireless LAN interface part is not reset, but TCP Socket Port is cut off.

USB communication settings

Select the [USB] tab to display the following screen.

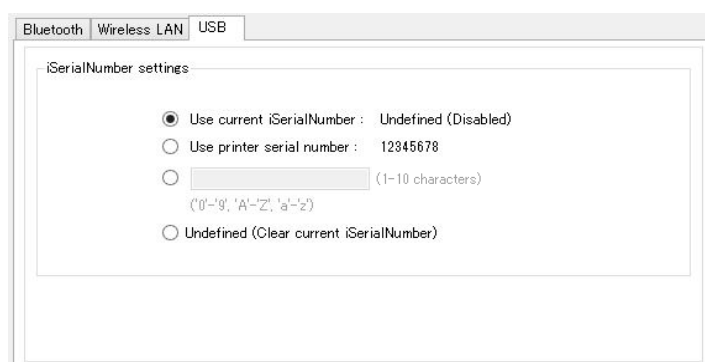


Figure 3-16 [USB] Tab Screen

Name	Description
iSerialNumber Settings	<p>Use current iSerialNumber: Uses the USB iSerialNumber currently set to the printer iSerialNumber is not set at the shipping.</p> <p>Use printer serial number: Sets the printer's serial number to iSerialNumber.</p> <p>Input text box: Sets a character string to iSerialNumber.*1 1 to 10 characters can be input for the string.</p> <p>Undefined: (Default) Clears the current USB iSerialNumber which is set to the printer.</p>

*1: The characters available for setting are as follows:
'0' to '9', 'A' to 'Z', 'a' to 'z'

Caution

- ◆ When iSerialNumber is changed in the state that the connection method with the printer is USB communication, the printer needs to be restarted. When restarting the printer, the printer driver is automatically installed as a new printer. To perform the communication settings of the newly connected printer, restart the software.



Seiko Instruments Inc.
1-8, Nakase, Mihama-ku, Chiba-shi,
Chiba 261-8507, Japan
Print System Division
Telephone:+81-43-211-1106
Facsimile:+81-43-211-8037

Seiko Instruments USA Inc.
Thermal Printer Div.
21221 S. Western Avenue, Suite 250, Torrance, CA 90501, USA
Telephone:+1-310-517-7778 Facsimile:+1-310-517-7779

Seiko Instruments GmbH
Siemensstrasse 9, D-63263 Neu-Isenburg, Germany
Telephone:+49-6102-297-0 Facsimile:+49-6102-297-222
info@seiko-instruments.de

Seiko Instruments (H.K.) Ltd.
4-5/F, Wyler Center 2,200 Tai Lin Pai Road, Kwai Chung, N.T., Kowloon, Hong Kong
Telephone:+852-2494-5160 Facsimile:+852-2424-0901

(Specifications are subject to change without notice.)