



# SII Log Setting Utility for Windows User's Guide

Rev.04

[Products]

SLP720RT Series

SLP721RT Series

Seiko Instruments Inc.

Rev.01 March 2022  
Rev.02 October 2022  
Rev.03 January 2024  
Rev.04 May 2025


Copyright©2022-2025 by Seiko Instruments Inc. All rights reserved.

Microsoft® and Windows® are registered trademarks of Microsoft Corporation in the U.S., Japan, and other countries.

All other trademarks are the properties of their respective companies.

Seiko Instruments Inc. (hereinafter referred to as "SII") has prepared this manual for use by SII personnel, licensees, and customers. The information contained herein is the property of SII and shall not be reproduced in whole or in part without the prior written approval of SII.

SII reserves the right to make changes without notice to the specifications and materials contained herein and shall not be responsible for any damages (including consequential) caused by reliance on the materials presented, including but not limited to typographical, arithmetic, or listing errors.

SII  is a trademark of Seiko Instruments Inc.

---

# Introduction

---

This manual describes "SII Log Setting Utility for Windows" (hereinafter referred to as the "software") provided by Seiko Instruments Inc. (hereinafter referred to as "SII").

## Notation in This Manual

---

The notation in this manual is described.

### Operation and Display

In principle, this manual is written on the basis of the following conditions:

- Screenshots and display layouts of Windows 10
- Operating instructions with a mouse and a keyboard

### Operating System Abbreviations

The operating system abbreviations used in this manual are listed below.

Operating System	Abbreviation
General Microsoft® Windows®	Windows
Microsoft® Windows® 11	Windows 11
Microsoft® Windows® 11 IoT Enterprise	
Microsoft® Windows® 10	Windows 10
Microsoft® Windows® 10 IoT Enterprise	
Microsoft® Windows Server® 2025	Windows Server 2025
Microsoft® Windows Server® 2022	Windows Server 2022
Microsoft® Windows Server® 2019	Windows 10 (Windows Server 2019)
Microsoft® Windows Server® 2016	Windows 10 (Windows Server 2016)

## Terms

The terms used in this manual are defined as below.

Term	Description
Printer driver	"SII Printer Driver for Windows" for SLP720RT/SLP721RT series
Printer folder	Folder displayed by the following operations: [Devices and Printers] folder displayed by selecting [Control Panel] => [Hardware and Sound] => [Devices and Printers]

## Symbols

The symbols used in this manual are described below.

### Caution

◆ Notes and limitations are described.

<b>Chapter 1</b>	<b>Overview</b>	<b>1-1</b>
1.1	Operating Environment	1-1
1.1.1	System Environment	1-1
1.1.2	Target Products	1-1
<b>Chapter 2</b>	<b>Installation</b>	<b>2-1</b>
<b>Chapter 3</b>	<b>Method of Operation</b>	<b>3-1</b>
3.1	Startup	3-1
3.2	Screen Layout	3-3
3.2.1	Log Setting Screen	3-3
3.2.2	Setting Button	3-4
3.3	Function	3-5
3.3.1	How to Set Log Output	3-5
3.4	Log File Format	3-6

---

# Chapter 1 Overview

---

This chapter describes the overview of this software.

This software is for setting log output of the target products.

## 1.1 Operating Environment

---

The operating environment of this software is described.

### 1.1.1 System Environment

The system environment of this software is shown below.

Item	Specifications
Operating System	Microsoft® Windows® 11 (64 bits) Microsoft® Windows® 11 IoT Enterprise (64 bits) Microsoft® Windows® 10 (32 bits and 64 bits) Microsoft® Windows® 10 IoT Enterprise (32 bits and 64 bits) Microsoft® Windows Server® 2025 (64 bits) Microsoft® Windows Server® 2022 (64 bits) Microsoft® Windows Server® 2019 (64 bits) Microsoft® Windows Server® 2016 (64 bits)

### 1.1.2 Target Products

The products covered by this software are as follows.

Printer	Software
SLP720RT Series SLP721RT Series*1	<ul style="list-style-type: none"><li>▪ "SII Printer Driver for Windows" for SLP720RT/SLP721RT series</li><li>▪ "SII SDK for Windows" for SLP720RT/SLP721RT series</li><li>▪ "SII Printer Setting Utility for Windows" for SLP720RT/SLP721RT series</li></ul>

\*1: The sales destination is Japan only.

---

# Chapter 2 Installation

---

This software is installed at the same time with the printer driver.

For the installation procedure of the printer driver, see the installation part of "SII Printer Driver for Windows User's Guide" for SLP720RT/SLP721RT series.

---

# Chapter 3 Method of Operation

---

This chapter describes the startup and the setting screen of the software.

## 3.1 Startup

---

The startup procedures of the software are described below.

Start the software by one of the following methods.

### **Start from Start Menu or Start Screen**

- **For Windows 11 and Windows Server 2025:**

Select [All] or [All apps] - [Smart Label Printer RT Series] - [Log Setting Utility] from Start menu, and then the software starts up.

- **For Windows 10 and Windows Server 2022:**

Select [Smart Label Printer RT Series] - [Log Setting Utility] from Start menu, and then the software starts up.



## Start from Printer Properties

1. Display the sub menu by right clicking the printer icon displayed in [Printer Folder].
2. Select [Printer Properties] from the displayed sub menu.
3. Display the following screen by selecting the [Utility] tab in the [Printer Properties] screen.  
Click the [Log] button in the [Utility] tab, and then the software starts up.

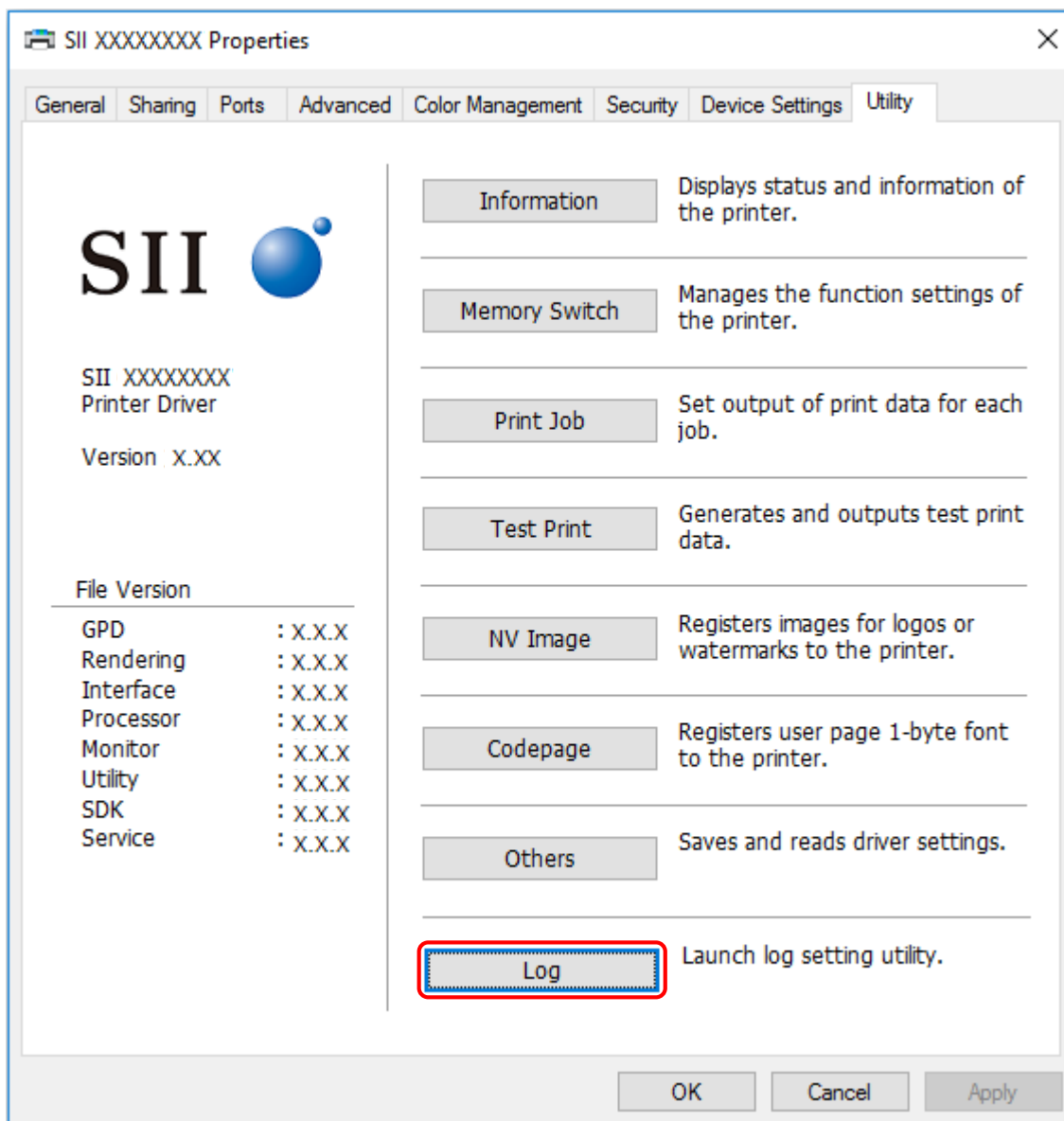


Figure 3-1 [Utility] Screen

## 3.2 Screen Layout

The screen layout of the software is described.

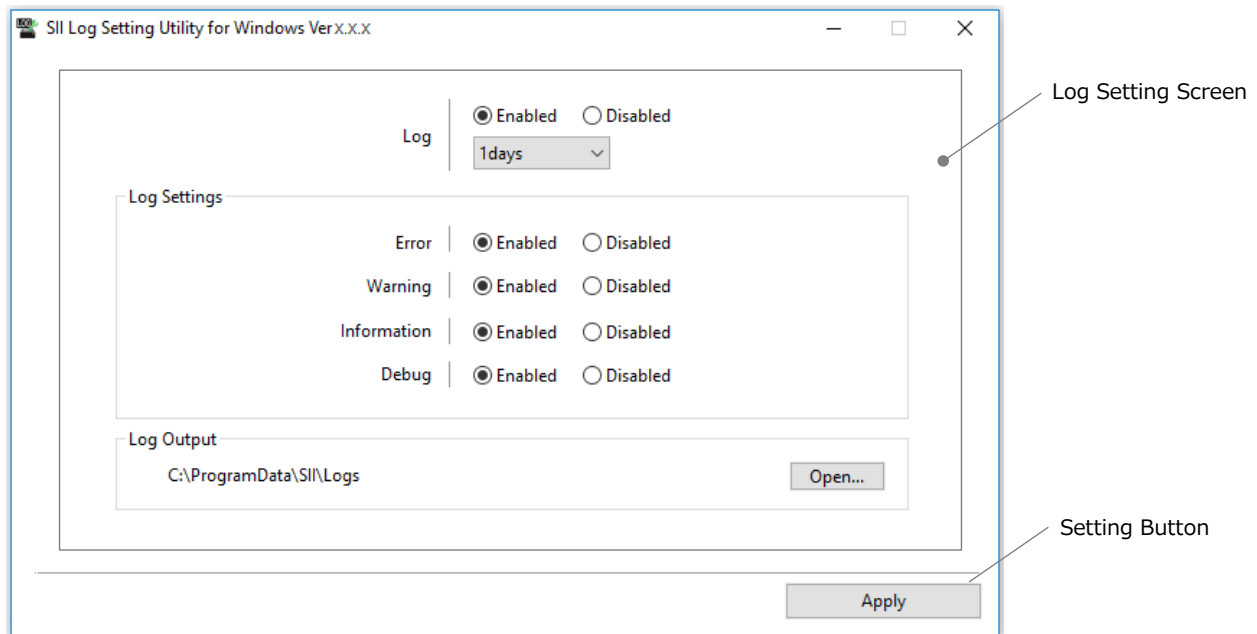


Figure 3-2 [Log] Screen

### 3.2.1 Log Setting Screen

Name	Description ("": Default)
Log	<p>Enables or disables the log output.</p> <ul style="list-style-type: none"> <li>• Enabled</li> <li>• Disabled</li> </ul> <p>When "Enabled" is selected, select the retention period.</p> <ul style="list-style-type: none"> <li>• 1 day</li> <li>• 3 days</li> <li>• 10 days</li> <li>• 30 days</li> <li>• 90 days</li> </ul> <p>The output log is cleared when the retention period elapses regardless of whether log output is enabled or disabled at the time.</p> <p>The actual retention period may be longer by 1 day at maximum.</p> <p>However, the output log is not cleared while the software for SLP720RT/SLP721RT series does not operate.</p> <p>The maximum size of a log file is about 32 MB. When it exceeds the maximum size, a new log file is created and stored up to the retention period.</p>
Log Settings*1	Sets the level of the log output.
Error	<p>Used to select whether to output logs that are in error level.</p> <p>When "Enabled" is selected, the log is output if an error that processing cannot be continued is detected.</p> <ul style="list-style-type: none"> <li>• Enabled</li> <li>• Disabled</li> </ul>

Name		Description ("": Initial Value)
	Warning	Used to select whether to output logs that are in warning level. When "Enabled" is selected, the log is output if an error within a range that processing can be continued is detected. <ul style="list-style-type: none"> <li>• Enabled</li> <li>• Disabled</li> </ul>
	Information	Used to select whether to output logs that are in information level. When "Enabled" is selected, information such as history of basic operation is output by log. <ul style="list-style-type: none"> <li>• Enabled</li> <li>• Disabled</li> </ul>
	Debug	Used to select whether to output more detailed debug information than information level by log. When "Enabled" is selected, history of more detailed operation than Information is output by log as a dump log. <ul style="list-style-type: none"> <li>• Enabled</li> <li>• Disabled</li> </ul> <p>The maximum size of a dump log is 256 bytes. When it exceeds the maximum size, the subsequent dump log will not be output.</p>
Log Output		Displays the log output destination. The log output destination and the file name are as follows: Output destination: <System Drive>\ProgramData\SI\Logs\<Category Name> File name: <yyyyMMdd>.log However, when the log file exceeds the maximum size, the file name is changed to <yyyyMMdd_hhmmssfff>.log, and a new <yyyyMMdd>.log is created.*2
Open...		Opens the route folder in which log files of each category are stored. The output destination cannot be changed.

\*1: Not available when [Log] is "Disabled".

\*2: The meanings of the symbols used for the file name are as follows. Each value comes from System Clock of Windows.

yyyy : Year  
 MM : Month  
 dd : Day  
 hh : Hour  
 mm : Minute  
 ss : Second  
 fff : Millisecond

### 3.2.2 Setting Button


Name	Description
Apply	Determines the log output contents and starts the log output.

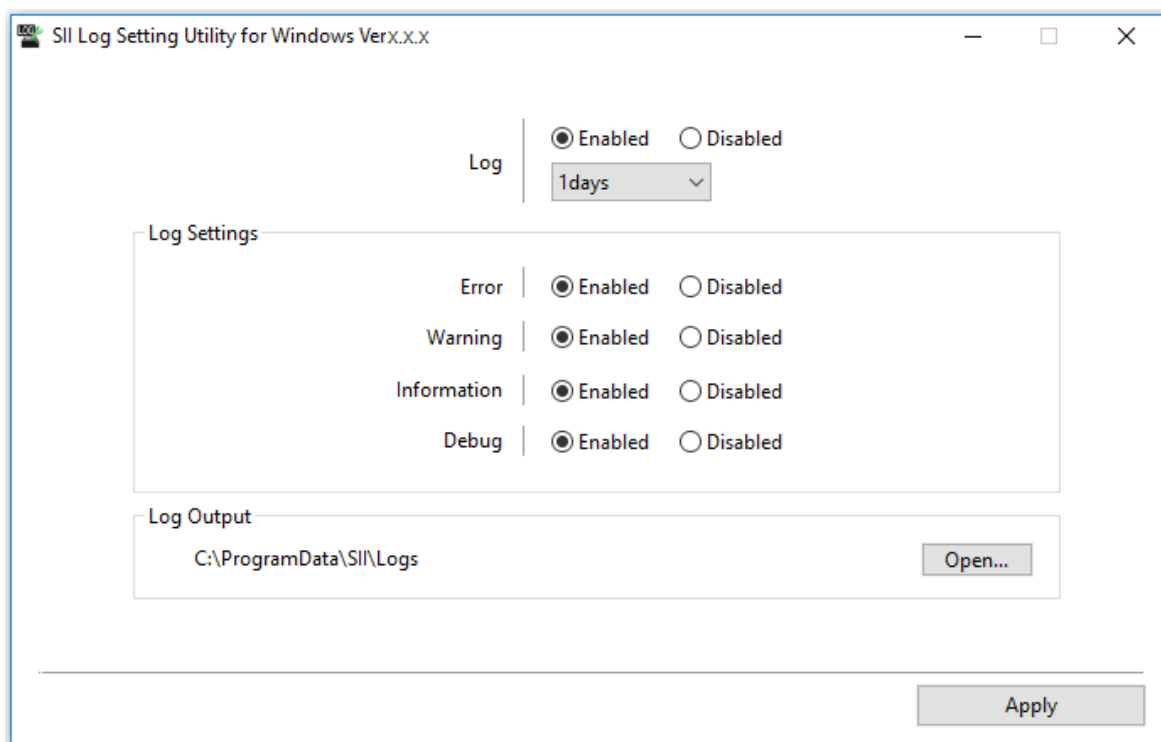
## 3.3 Function

The function of the software is described.

### 3.3.1 How to Set Log Output

This section describes how to set log output.

1. Start the software in the procedure of "3.1 Startup" to display the following screen.
2. Select "Enabled" in [Log] and select the retention period.
3. Select each item of [Log Settings].
4. Click the [Apply] button.
5. Click the  [Close] button on the title bar to exit the software.



### Caution

- ◆ [Apply] of the log output requires logon to the computer with administrator privileges.
- ◆ Avoid unnecessary log output since the operation of the printer driver may be heavy when the log output is enabled.
- ◆ Log output may not be possible when the log file is kept open.

## 3.4 Log File Format

---

This section describes the log file format.

Logs are recorded in a log file for each line, and the file format has the following meanings.

[MM/dd hh:mm(ss.fff)]    [Process info]    [Lv]    [Module]    Message

Name	Description
Log output time [MM/dd hh:mm(ss.fff)]	The log output time is recorded. The meanings of the symbols are as follows: MM : Month dd : Day hh : Hour mm : Minute ss : Second fff : Millisecond
Process information [Process info]	The process information is recorded.
Log level [Lv]	The log level is recorded. The meanings of the symbols are as follows: E : Error W : Warning I : Information D : Debug
Module identification name [Module]	The module identification name is recorded.
Message	A message is recorded.