



Smart Label Creator Install User's Guide

U00133108710


Seiko Instruments Inc.

U00133108700	May 2014
U00133108701	September 2014
U00133108702	April 2015
U00133108703	June 2015
U00133108704	March 2016
U00133108705	March 2017
U00133108706	May 2020
U00133108707	November 2021
U00133108708	July 2022
U00133108709	October 2022
U00133108710	March 2023

Copyright© 2014-2023 by Seiko Instruments Inc.
All rights reserved.

Seiko Instruments Inc. (hereinafter referred to as "SII") has prepared this manual for use by SII personnel, licensees, and customers. The information contained herein is the property of SII and shall not be reproduced in whole or in part without the prior written approval of SII.

SII reserves the right to make changes without notice to the specifications and materials contained herein.

SII  is a trademark of Seiko Instruments Inc.

Smart Label Creator Install Guide

The following information shows the introduction of Smart Label Creator and related software (hereinafter referred to as "the software").

Software Overview

The configuration of the software is shown below. You can also select only the required software at installation. However, Printer Driver shall be installed.

- Smart Label Creator
Software that enables you to quickly create and print labels of the SMART LABEL PRINTER®.
- Import DB to Smart Label Creator
Software that you can import specific data of Microsoft® Word®, Excel®, Outlook®, and Access® into the database of the Smart Label Creator.
- Copy Text to Smart Label Creator
Software resides in the Windows taskbar and allows you to import text data selected in web browsers, e-mails, etc. into the Smart Label Creator.
- Software Development Kit (hereinafter referred to as "SDK")
Libraries that provide printing functions of the SMART LABEL PRINTER®. SDK is used from an application created by a user.
- Printer Driver
A printer driver that is used by the above software. It is also used for printing from general-use applications.
- TechnicalSupport
Software that automatically acquires status, information, and data when a trouble occurs with the Smart Label Creator, and then saves it all as a technical support analysis file.

Operating Environment

The following describes the operating environment of the software.

Host Environment

Windows

- Microsoft® Windows® 10 (32 bit / 64 bit)
- Microsoft® Windows® 11 (64 bit)

Mac

- macOS™ 10.15
- macOS™ 11
- macOS™ 12
- macOS™ 13

✓ Note

- Hereinafter, Host Environment is abbreviated as "Windows" or "Mac".
- Software install/uninstall require administrator privileges.

Supported Printer Model

- Smart Label Printer 650SE
- Smart Label Printer 650
- Smart Label Printer 620
- Smart Label Printer 450^{*1}
- Smart Label Printer 440^{*1}

^{*1} For using Smart Label Printer 450/440, a custom installation is needed. See the following "Install" for details.

Supported Port

- USB Port
- Serial Port (COM Port)

Install

The following describes how to install the software.

Windows version (Normal installation)

Please download the zip file from the web page (www.sii-ps.com/slp/).

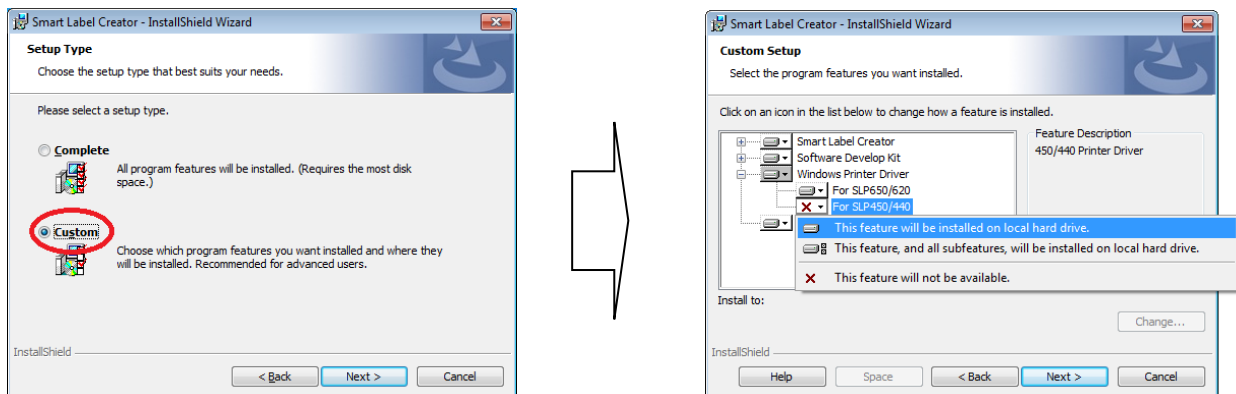
Double-click the downloaded zip file to unzip. Start up the installer by double-clicking the *Setup.exe* file inside the folder.

Proceed with the installation according to the wizard when the installation program launches.

For using Case Smart Label Printer 450/440

Select the [Custom] on the [Setup Type] of install wizard.

Change the setting from "For SLP450/440" to the local hard drive as follows in the dropdown list displayed on the next screen.

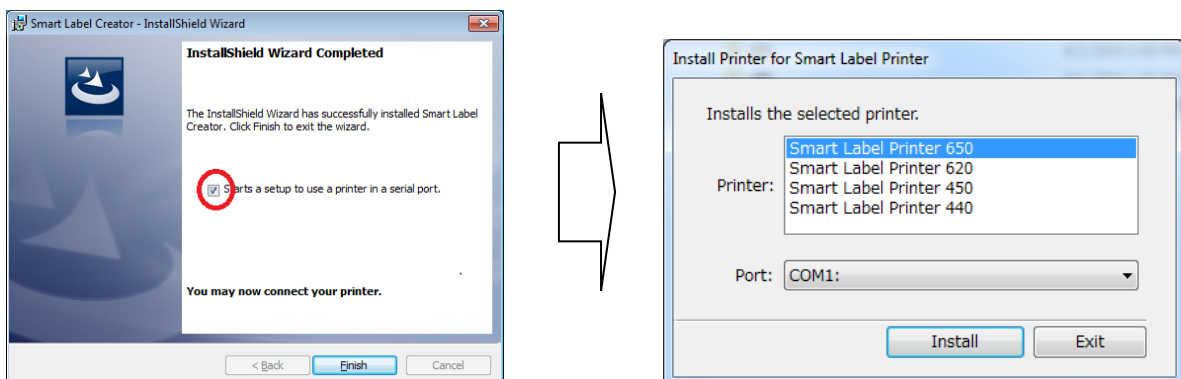


For using Printer with USB Connection

Windows will automatically set up your printer when it is connected.

For using Printer with Serial Connection

Select the check box on the last screen of the installation as follows. When you select the [Finish] button, the setup screen for serial connection is displayed. Select a printer name and connection port.



Windows version (Silent Installation)

To perform a silent installation, execute the following commands.

- \x86\setup32.exe /s /v"/qn" (32bit version)
- \x64\setup64.exe /s /v"/qn" (64bit version)

✓ Note

When connecting serial port or using Smart Label Printer 450/440, the silent installation cannot be used.

Mac version

Please download the disc image file (.dmg) from the web page (www.sii-ps.com/slp/).

Double-click the downloaded disc image file (.dmg), it is mounted on the Mac volume. Start up the installer by double-clicking the *SII Smart Label Printer.pkg* file there.

✓ Note

Mac does not support the silent installation.

Uninstall

The following describes how to uninstall the software.

Windows version

1. Delete applications

Select the "Smart Label Creator" from the [Uninstall a program] in the Control panel. Click the [Uninstall] and delete the applications.

2. Delete applications data created by the user unit.

Application data created by the user unit in the Smart Label Creator cannot be deleted, when you only perform the operation of 1. Delete applications. When you delete the applications, you need to delete the following files in Explorer. Label data files and database files created by users are not included in application data.

%USERPROFILE%\AppData\Roaming\Smart Label Creator

Mac version

1. Move to the Trash Seiko Instruments Inc folder that contains the Smart Label Creator application from the Application folder.

2. Select the [System Preferences...] from Apple Menu.

3. Select the [Print & Scan].

4. Select the printer name in the list, and then click "-" at the bottom.

5. From Finder, etc., delete the following folders and files.

- ✓ /Applications/Seiko Instruments Inc/Smart Label Creator/
- ✓ /Library/Application Support/Smart Label Creator
- ✓ /Library/Printers/PPDs/Contents/Resources/slp440.ppd.gz
- ✓ /Library/Printers/PPDs/Contents/Resources/slp450.ppd.gz
- ✓ /Library/Printers/PPDs/Contents/Resources/slp620.ppd.gz
- ✓ /Library/Printers/PPDs/Contents/Resources/slp650.ppd.gz
- ✓ /Library/Printers/SII/SmartLabelPrinter

6. Execute the following commands by terminal, etc., delete the package information.

- ✓ "sudo pkgutil --forget com.seikoinstruments.SmartLabelCreator.pkg"
- ✓ "sudo pkgutil --forget com.seikoinstruments.SmartLabelPrinterDriver.pkg"

Reference Documents

The following describes the reference information except for this document.

- For instructions on Smart Label Creator, see Help File from the Help Menu of Smart Label Creator.
- For instructions on SDK, click [All programs] from "Windows Start Menu", and then click in order [Smart Label Printer], [Software Development Kit], and [Application Programmer's Guide]. See Application Programmer's Guide of SDK displayed by the above procedure.

Precautions

- Do not install the Smart Label (for SLP software) before version 7.1 after installing software.
- All the software uses printer drivers for printing. Do not delete printer drivers.

Disclaimer

SII has carefully designed this product to ensure that it is problem-free. However, SII is not liable for any direct, indirect, or consequential damages or loss caused by or related to the use of the software.

Trademarks

©2014-2023 Seiko Instruments Inc. All rights reserved. Specifications are subject to change without notice. "SII" is a registered trademark of Seiko Instruments Inc. "SMART LABEL PRINTER®" is a registered trademark.

Microsoft®, Word®, Excel®, Outlook®, Access® and Windows® are either registered trademarks or trademarks of Microsoft Corporation in the U.S.A. and other countries.

macOS™ is a registered trademark of Apple Inc. in the U.S.A. and other countries.