



SII Communication Setting Utility for Windows User's Guide

Rev.03

[Products]

SLP720RT Series

SLP721RT Series

Seiko Instruments Inc.

Rev.01 March 2022
Rev.02 October 2022
Rev.03 March 2024


Copyright©2022-2024 by Seiko Instruments Inc.
All rights reserved.

Microsoft® and Windows® are registered trademarks of Microsoft Corporation in the U.S., Japan, and other countries.

All other trademarks are the properties of their respective companies.

Seiko Instruments Inc. (hereinafter referred to as "SII") has prepared this manual for use by SII personnel, licensees, and customers. The information contained herein is the property of SII and shall not be reproduced in whole or in part without the prior written approval of SII.

SII reserves the right to make changes without notice to the specifications and materials contained herein and shall not be responsible for any damages (including consequential) caused by reliance on the materials presented, including but not limited to typographical, arithmetic, or listing errors.

SII  is a trademark of Seiko Instruments Inc.

Introduction

This manual describes "SII Communications Setting Utility for Windows" (hereinafter referred to as the "software") provided by Seiko Instruments Inc. (hereinafter referred to as "SII").

Notation in This Manual

The notation in this manual is described.

Operation and Display

In principle, this manual is written on the basis of the following conditions:

- Screenshots and display layouts of Windows 10 and SLP720RT
- Operating instructions with a mouse and a keyboard

Operating System Abbreviations

The operating system abbreviations used in this manual are listed below.
When an individual description is necessary, the description is written in parentheses behind the abbreviation.

| Operating System | Abbreviation |
|---------------------------------------|----------------------------------|
| General Microsoft® Windows® | Windows |
| Microsoft® Windows® 11 | Windows 11 |
| Microsoft® Windows® 11 IoT Enterprise | |
| Microsoft® Windows® 10 | Windows 10 |
| Microsoft® Windows® 10 IoT Enterprise | |
| Microsoft® Windows Server® 2022 | Windows Server 2022 |
| Microsoft® Windows Server® 2019 | Windows 10 (Windows Server 2019) |
| Microsoft® Windows Server® 2016 | Windows 10 (Windows Server 2016) |

Terms

The terms used in this manual are defined as below.

| Term | Description |
|---------------------|---|
| Printer | SLP720RT series printer SLP721RT series printer |
| Printer driver | "SII Printer Driver for Windows" for SLP720RT/SLP721RT series |
| Technical Reference | Technical Reference shown as follows: - SLP720RT SERIES THERMAL PRINTER TECHNICAL REFERENCE - SLP721RT SERIES THERMAL PRINTER TECHNICAL REFERENCE |
| iSerialNumber | Content defined in iSerialNumber field of USB device descriptor |

Symbols

The symbols used in this manual are described below.

Caution

◆ Notes and limitations are described.

Reference

◆ Supplemental information and related matters are described.

| | | |
|------------------|--|------------|
| Chapter 1 | Overview | 1-1 |
| 1.1 | Operating Environment _____ | 1-1 |
| 1.1.1 | System Environment | 1-1 |
| 1.1.2 | Target Products | 1-2 |
| Chapter 2 | Installation | 2-1 |
| Chapter 3 | Communication Settings | 3-1 |
| 3.1 | Startup _____ | 3-1 |
| 3.2 | Screen Layout _____ | 3-2 |
| 3.2.1 | Port List..... | 3-2 |
| 3.2.2 | Setting Buttons | 3-2 |
| 3.2.3 | Setting Screen for Each Connection Method | 3-3 |
| 3.3 | Function _____ | 3-6 |
| 3.3.1 | Confirm Current Communication Settings | 3-6 |
| 3.3.2 | Change Communication Settings | 3-7 |
| 3.3.3 | Restore Communication Settings to Default Settings | 3-8 |
| 3.3.4 | Save Communication Settings to File..... | 3-9 |
| 3.3.5 | Write File Settings to Printer..... | 3-10 |

Chapter 1 Overview

This chapter describes the overview of the software.

The software is for changing the communication settings of the printer.
The following communication settings can be changed with the software:

- Bluetooth communication settings*¹
- LAN communication settings*²
- USB communication settings

*1: Part of settings are not supported.

*2: Basically set up using a Web browser.

The software can set some items as a supplement to Web browser setting.

1.1 Operating Environment

The operating environment of the software is described.

1.1.1 System Environment

The system environment of the software is shown below.

| Item | Specifications |
|------------------|---|
| Operating System | Microsoft® Windows® 11 (64 bits) Microsoft® Windows® 11 IoT Enterprise (64 bits) Microsoft® Windows® 10 (32 bits and 64 bits) Microsoft® Windows® 10 IoT Enterprise (32 bits and 64 bits) Microsoft® Windows Server® 2022 (64 bits) Microsoft® Windows Server® 2019 (64 bits) Microsoft® Windows Server® 2016 (64 bits) |
| .NET Framework | .NET Framework 3.5 or 4.0 to 4.8 |

1.1.2 Target Products

The products covered by the software are as follows.

| Printer | Interface | Printer Driver |
|-----------------|-----------|--|
| SLP720RT Series | USB | "SII Printer Driver for Windows" for SLP720RT/SLP721RT series |
| | LAN | |
| SLP721RT Series | USB | |
| | Bluetooth | |
| | LAN | |

Chapter 2 Installation

The software is installed at the same time with the printer driver.

For the installation procedure of the printer driver, see the installation part of "SII Printer Driver for Windows User's Guide" for SLP720RT/SLP721RT series.

Chapter 3 Communication Settings

This chapter describes the startup and the setting screen of the software.

3.1 Startup

The startup procedures of the software are described.

- **For Windows 11**

Select [All apps] - [Smart Label Printer RT Series] - [Communication Setting Utility] from the Start menu, and then the software starts up.

- **For Windows 10 and Windows Server 2022**

Select [Smart Label Printer RT Series] - [Communication Setting Utility] from the Start menu, and then the software starts up.

3.2 Screen Layout

The screen layout of the software is described.

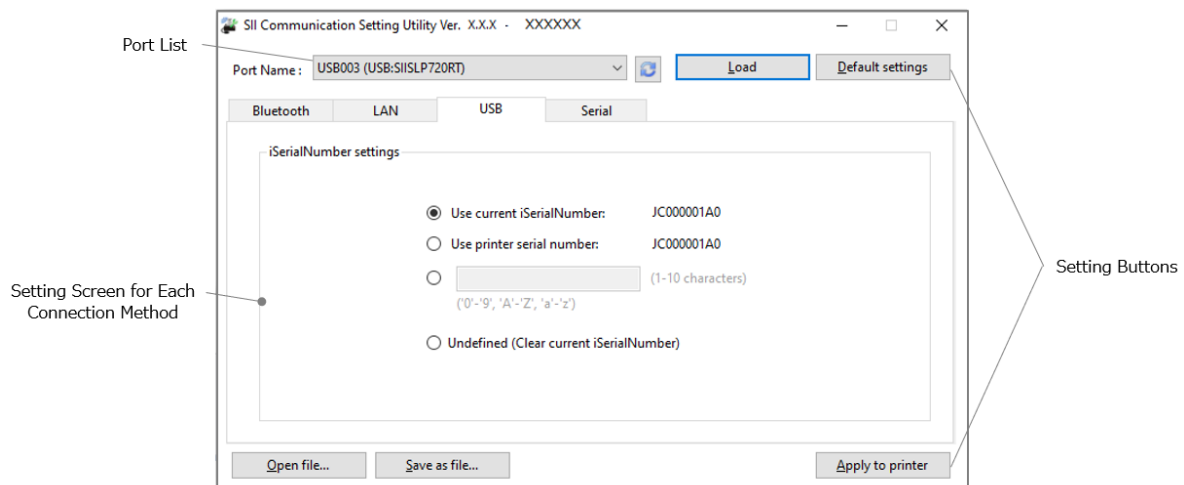



Figure 3-1 Whole view

3.2.1 Port List

The port list shown in Figure 3-1 is described below.

| Name | Description |
|---|--|
| Port Name | Displays available port name and port information. |
|  Refresh | Updates the list of [Port Name]. Update the list with this button, for example, when connected the printer after starting the software. |

3.2.2 Setting Buttons

The setting buttons shown in Figure 3-1 are described below.

| Name | Description |
|------------------|--|
| Load | Loads and displays the setting information of the printer connected to the port selected in [Port Name]. |
| Default settings | Loads the default settings from the printer and displays them. The settings currently displayed will be overwritten with the default settings. |
| Open file... | Loads and displays the saved file (*.scs). |
| Save as file... | Saves the contents displayed in the setting screen for each connection method as a file (*.scs). |
| Apply to printer | Writes the contents displayed in the setting screen for each connection method to the printer. |

3.2.3 Setting Screen for Each Connection Method

Communication setting of each connection method can be performed. See "Technical Reference".

Caution

- ◆ It is only possible to input or select the setting items supported by the printer.

Bluetooth communication settings

Bluetooth LAN USB Serial

Bluetooth Device Name: (2-30 characters)

Security Mode:

Association Model:

PIN Code: (4-16 characters)

Inquiry Response:

iOS Auto Connection:

Figure 3-2 [Bluetooth] Tab Screen

| Name | Description |
|-----------------------|---|
| Bluetooth Device Name | Used to enter the Bluetooth device name.*1 2 to 30 characters can be entered. If the text box is blank, it is ignored. |
| PIN Code | Used to enter PIN Code.*1 4 to 16 characters can be entered. If the text box is blank, it is ignored. PIN code is not loaded even when the [Load] button is clicked. |
| Default | '0000' is input in [PIN Code]. |
| Inquiry Response | Selects for Inquiry Response. Pairing Mode: The printer responds to the search from the Bluetooth host only during pairing mode. To enable the printer to be in pairing mode, turn off the printer power and then press the power switch for 7 seconds or more. The LED blinks 2 times in blue for 1 second, and the printer enters pairing mode for about 60 seconds. Always: The printer always responds to the search from the Bluetooth host. |
| iOS Auto Connection | Selects for iOS Auto Connection. Disable: iOS Auto Connection is disabled. Enable: When the connection with the iOS device is disconnected, the printer attempts to reconnect to the iOS device that was last connected. |

*1: The characters available for setting are as follows:
'0' to '9', 'a' to 'z', 'A' to 'Z', '+', '-', '_', '#', '*', and ' ' (space: 20H)

Caution

◆ Bluetooth connection is not supported by Windows Server 2022, 2019 or 2016.

LAN communication settings

Bluetooth LAN USB Serial

DHCP Timeout: 11 (1-300s)

Receive Timeout: 300 (60-300s)

LAN connection only

LAN settings...

Figure 3-3 [LAN] Tab Screen

| Name | Description |
|-----------------|--|
| DHCP Timeout | Used to set the DHCP timeout period. |
| Receive Timeout | Used to set the receive timeout period. |
| LAN settings | Opens the printer's LAN settings in Web browser setting. It can be opened only with LAN connection. |

USB communication settings

Bluetooth LAN **USB** Serial

iSerialNumber settings

☒ Use current iSerialNumber: 1234567890

☐ Use printer serial number:

(1-10 characters)
(\'0\'-'9\' , \'A\'-'Z\' , \'a\'-'z\')

☐ Undefined (Clear current iSerialNumber)

Figure 3-4 [USB] Tab Screen

| Name | Description |
|------------------------|---|
| iSerialNumber settings | <ul style="list-style-type: none">• Use current iSerialNumber: Uses the iSerialNumber currently set for the printer. iSerialNumber is not set at the shipping.• Use printer serial number: Sets the serial number of the printer to iSerialNumber.• Input text box: Sets a character string to iSerialNumber.*1 The number of characters of the string that can be entered is 1 to 10.• Undefined: Clears the iSerialNumber currently set for the printer. |

*1: The characters available for setting are as follows:
'0' to '9', 'A' to 'Z', 'a' to 'z'

Caution

- ◆ When iSerialNumber is changed in the state that the connection method with the printer is USB communication, the assignment of the port to which the printer is connected may be changed.

3.3 Function

The function of the software is described.

3.3.1 Confirm Current Communication Settings

The procedure for confirming the current communication settings of the printer is described below.

1. Make sure that the connected printer can communicate.
2. Start the software in the procedure of "3.1 Startup".
When there is only one port that the host recognizes, the communication settings of the printer connected to the port are loaded automatically at the software startup. Proceed to step 4.
3. When there are multiple ports that the host recognizes, select the port to which the printer is connected from [Port Name], and click the [Load] button.

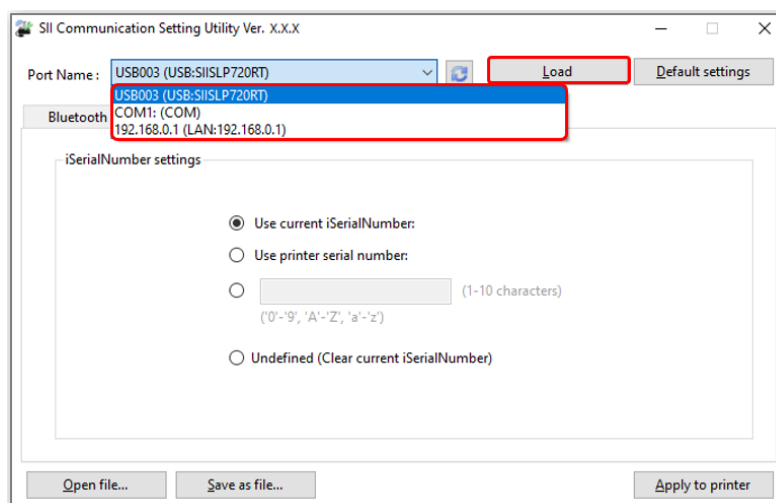


Figure 3-5 Port Selection

4. The communication settings are loaded, and the setting screen switches to the tab of the current connection method.

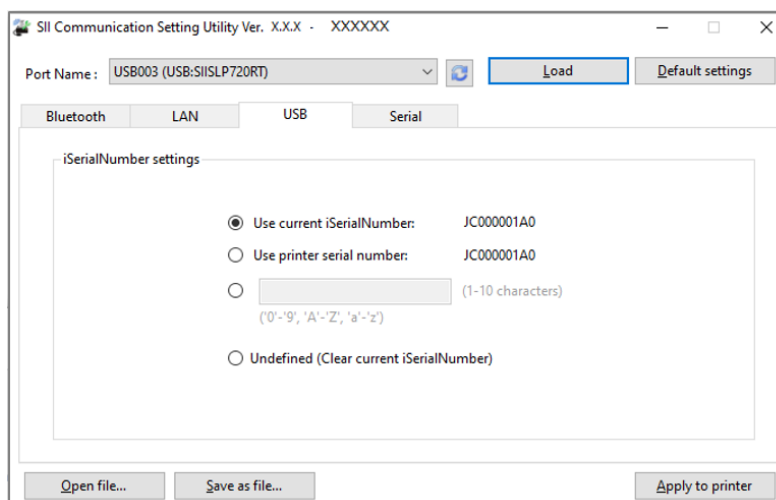



Figure 3-6 Communication Setting Display

Caution

- ◆ To confirm the communication settings of the newly connected printer after starting the software, click the [ Refresh] button to update [Port Name].
- ◆ Even when the [Load] button is clicked, the Bluetooth PIN code is not loaded.

3.3.2 Change Communication Settings

The procedure for changing the communication settings of the printer is described below.

1. Follow the steps of "3.3.1 Confirm Current Communication Settings" to display the current communication settings of the printer.
2. Change the contents of the communication settings, and then click the [Apply to printer] button. The communication settings are written to the printer.

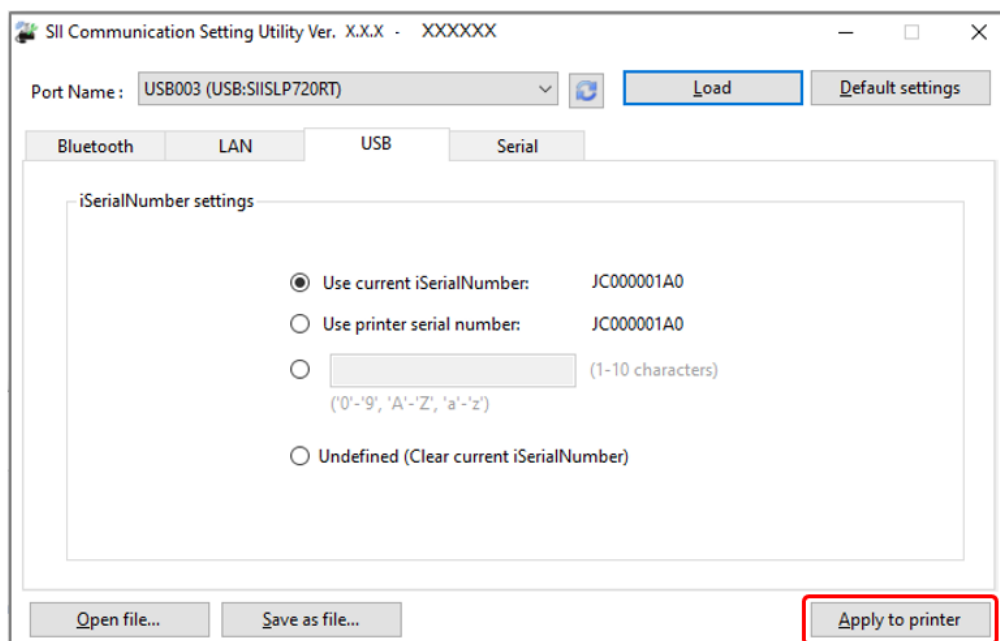


Figure 3-7 Change Communication Settings

Caution

- ◆ When iSerialNumber is changed in the state that the connection method with the printer is USB communication, the assignment of the port to which the printer is connected may be changed.

Reference

- ◆ The setting will not be changed if the input item in the screen is blank.
- ◆ When the communication settings are written to the printer, the printer is reset to enable the settings.

3.3.3 Restore Communication Settings to Default Settings

The procedure for restoring the communication settings of the printer to the default settings is described below.

1. Make sure that the connected printer can communicate.
2. Click the [Default settings] button to load the default settings from the printer and display them on the screen.

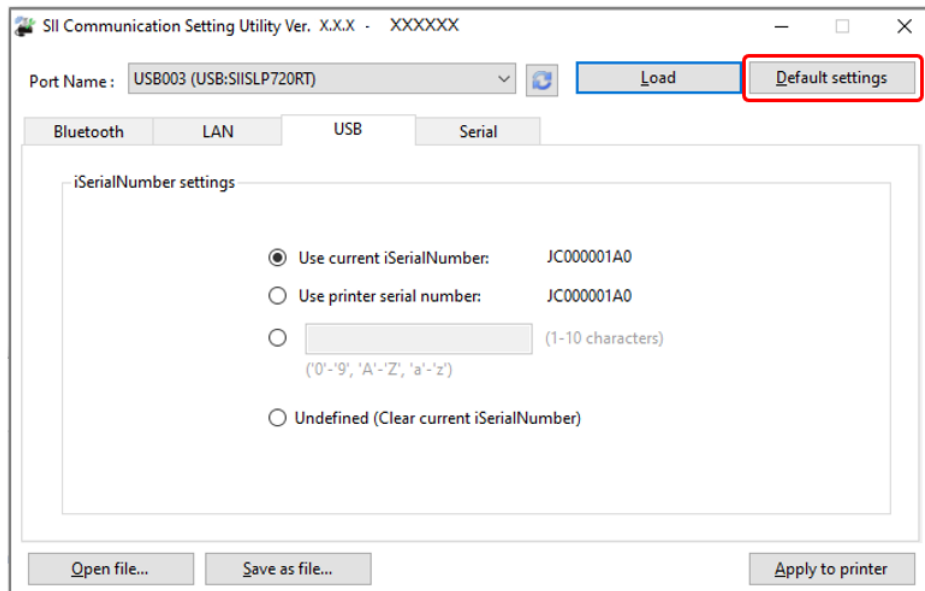


Figure 3-8 Default Settings

3. Click the [Apply to printer] button to write the communication settings to the printer.

Reference

- ◆ When the communication settings are written to the printer, the printer is reset to enable the settings.

3.3.4 Save Communication Settings to File

The procedure for saving the communication settings of the printer as a file (*.scs) is described below.

1. Display the communication settings of the printer in the procedure of "3.3.1 Confirm Current Communication Settings" or display the contents of the file in the procedure of "3.3.5 Write File Settings to Printer".
2. Change the communication settings when necessary.
3. Click the [Save as file...] button.

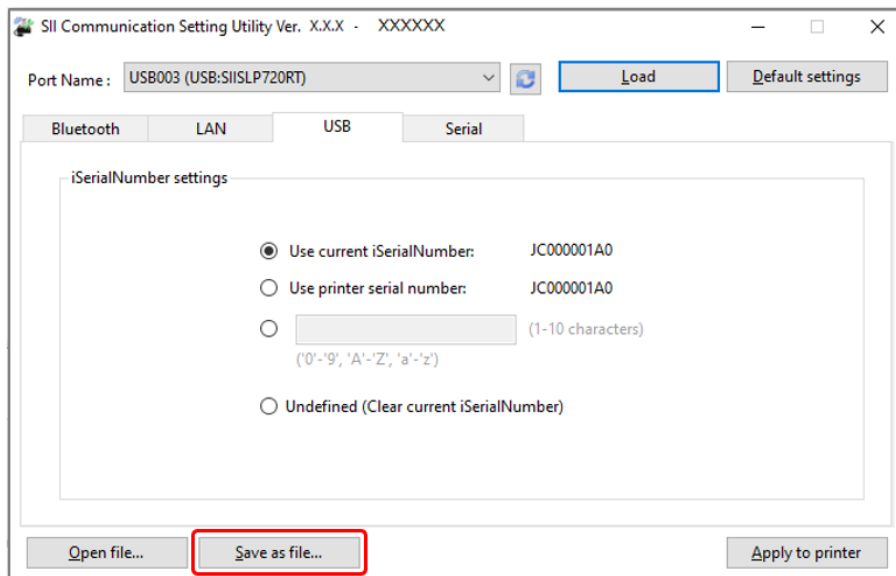


Figure 3-9 Save Communication Settings

4. Specify the location and the name of the file (*.scs).
Click the [Save] button to save the settings as a file (*.scs).

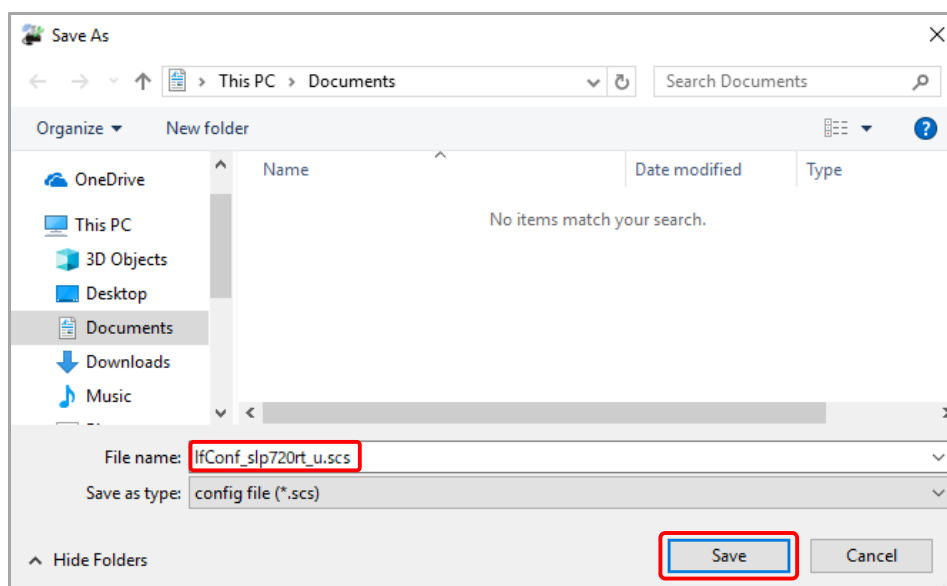


Figure 3-10 [Save as file...] Dialog

Caution

- ◆ The [PIN Code] setting in the [Bluetooth] tab is not saved in the file.

Reference

- ◆ The setting will not be saved in the file if the input item in the screen is blank.
- ◆ The default of the file name includes the printer series name and the abbreviation of the connection method of communication settings to be saved. The following shows an example.

IfConf_slp720rt_u.scs

Printer series name Connection method abbreviation

The meanings of the connection method abbreviations are as follows:
Several abbreviations are listed together depending on the settings stored in the file.

- b: Bluetooth communication settings
- u: USB communication settings
- l: LAN communication settings

3.3.5 Write File Settings to Printer

The procedure for writing the contents of the file (*.scs) saved in "3.3.4 Save Communication Settings to File" to the printer is described below.

1. Click the [Open file...] button.

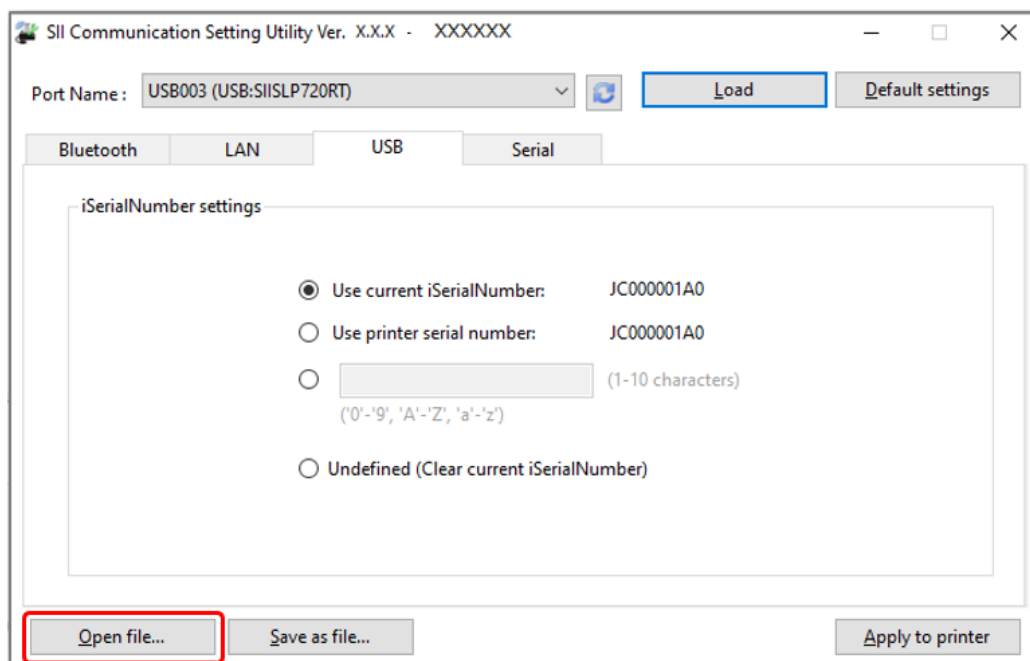


Figure 3-11 Open File (*.scs)

2. Select the file (*.scs), and click the [Open] button.

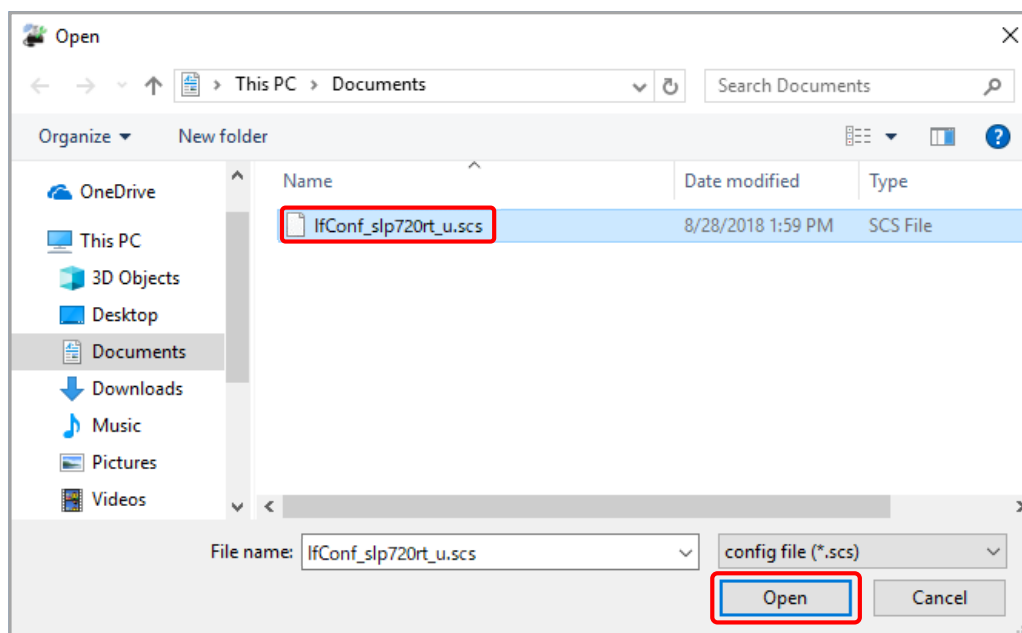


Figure 3-12 [Open] Dialog

3. The contents of the file (*.scs) are displayed.
Click the [Apply to printer] button to write the communication settings to the printer.

Caution

- ◆ When iSerialNumber is changed in the state that the connection method with the printer is USB communication, the assignment of the port to which the printer is connected may be changed.

Reference

- ◆ The setting will not be changed if the input item in the screen is blank.
- ◆ When the communication settings are written in the printer, the printer is reset to enable the settings.



Seiko Instruments Inc.
1-8, Nakase, Mihama-ku, Chiba-shi,
Chiba 261-8507, Japan
Print System Division
Telephone:+81-43-211-1106
Facsimile:+81-43-211-8037

Seiko Instruments USA Inc.
Thermal Printer Div.
21221 S. Western Avenue, Suite 250, Torrance, CA 90501, USA
Telephone:+1-310-517-7778 Facsimile:+1-310-517-7779

Seiko Instruments GmbH
Siemensstrasse 9, D-63263 Neu-Isenburg, Germany
Telephone:+49-6102-297-0 Facsimile:+49-6102-297-222
info@seiko-instruments.de

Seiko Instruments Trading (H.K.) Ltd.
7/F, Ying Tung Industrial Building, 802 Lai Chi Kok Road, Kowloon, Hong Kong
Telephone:+852-2494-5111 Facsimile:+852-2424-0901

(Specifications are subject to change without notice.)